

IAQSense

Air Quality in Closed Environments

Pictures for Final Report

[Tapez ici]

Attached documents : Furthermore, project logo, diagrams or photographs illustrating and promoting the work of the project (including videos, etc...), as well as the list of all beneficiaries with the corresponding contact names can be submitted

Current Logo of
IAQSense Project



Spin-off Logo
(IAQSense Ltd)



Name	Adress	Contact	Email	Tel
EFFICIENCE Marketing	95 rue Lazare Carnot - 92140 Clamart (France)	Claude Iroulart	clauderoulart@efficiencemarketing.com	+33140959080
Nano Analytik	Ehrenbergstr. 1 98693 Ilmenau (Germany)	Mathias Holz	m.holz@nanoanalytik.net	+4915165864493
IAQSense Ltd	Bvd Tzarigradsko Chaussee, 72 – 1784 Sofia (Bulgaria)	Stefan Andreev	andreev.stefan@abv.bg	+359894477660
Id-Mos	14 rue Galilée 33600 Pessac (France)	Paul-Emile Latimier	paul-emile.latimier@id-mos.com	+33557124367
CEA	50 avenue du Lac Léman 73375 Le Bourget-du-Lac (France)	Franck Alessi	franck.alessi@cea.fr	+33479792230
ISL	5, rue du Général Cassagnou BP 70034 68301 Saint-Louis Cedex (France)	Karine Bonnot	karine.bonnot@isl.eu	
Microsystems Ltd	Bul. Levski, Computer Centre 9010 Varna (Bulgaria)	Nikolay Nikolov	n.nikolov@mikrosistemi.com	+359878558320
Facet Ltd	2, Samokovsko Chaussee Sofia (Bulgaria)	Irena Hristova	irena.hristova@fables-cet.com	+359878707542
ACCIONA infraestructuras	C/ Valportillo Segunda, 8 Polígono Industrial Alcobendas 28108 Alcobendas (Madrid) (Spain)	Rafael Claret	rafaelclaret.socorro.hernandez@acciona.com	+34917912093
FSRM	Ruelle Dupeyrou 4 CH-2000 Neuchâtel	Annette Locher	locher@fsrcm.ch	+41327200903
EELEO	2 rue Danton 92120 Montrouge (France)	Jacques Montes	jacques.montes@eeleo.com	+33681134890

[Tapez ici]

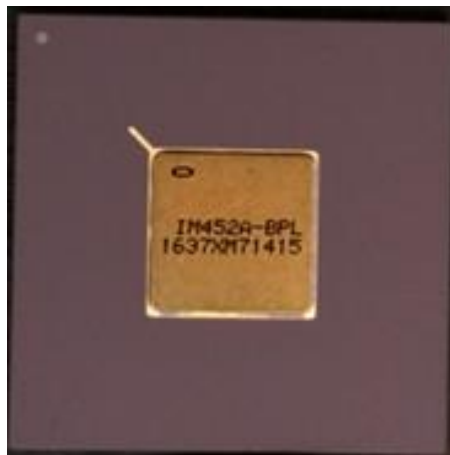
Photos :

Components



IM309D

8-Channels Gas-Cantilever drive and acquisition



IM452A

4-channels Spectrometer on Chip drive, acquisition and processing

Spectrometer on Chip



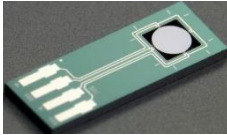
Spectrometer on Chip – P Type and N Type versions

Cantilever for gas detection



100kHz piezo-cantilever for gas detection

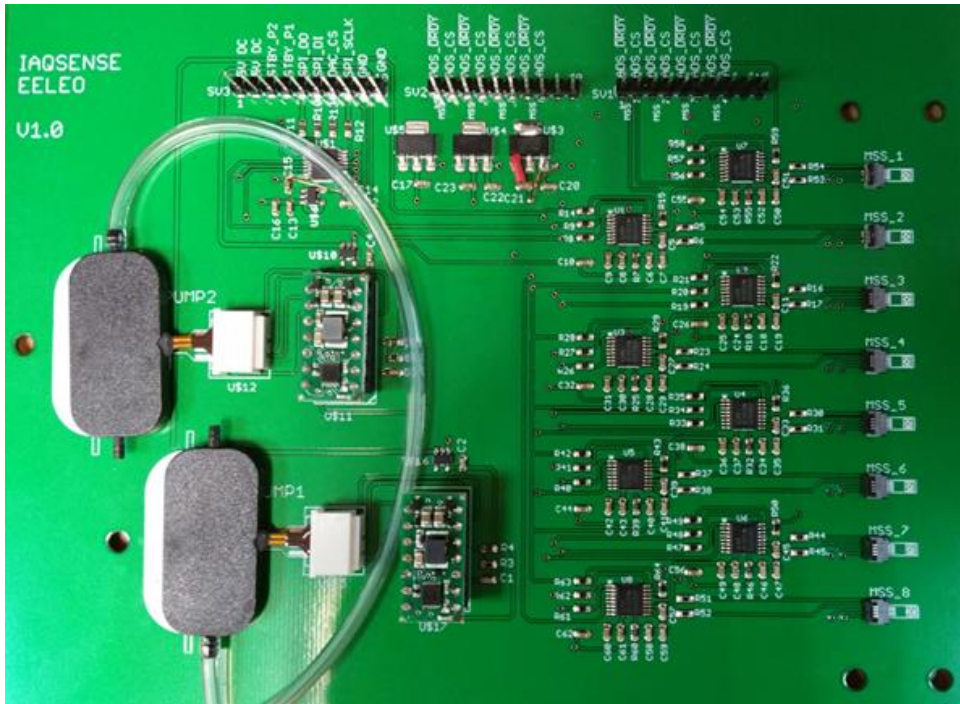
[Tapez ici]



Surface Stress Membranes (MSS) from NanoSensors for Benchmarkung

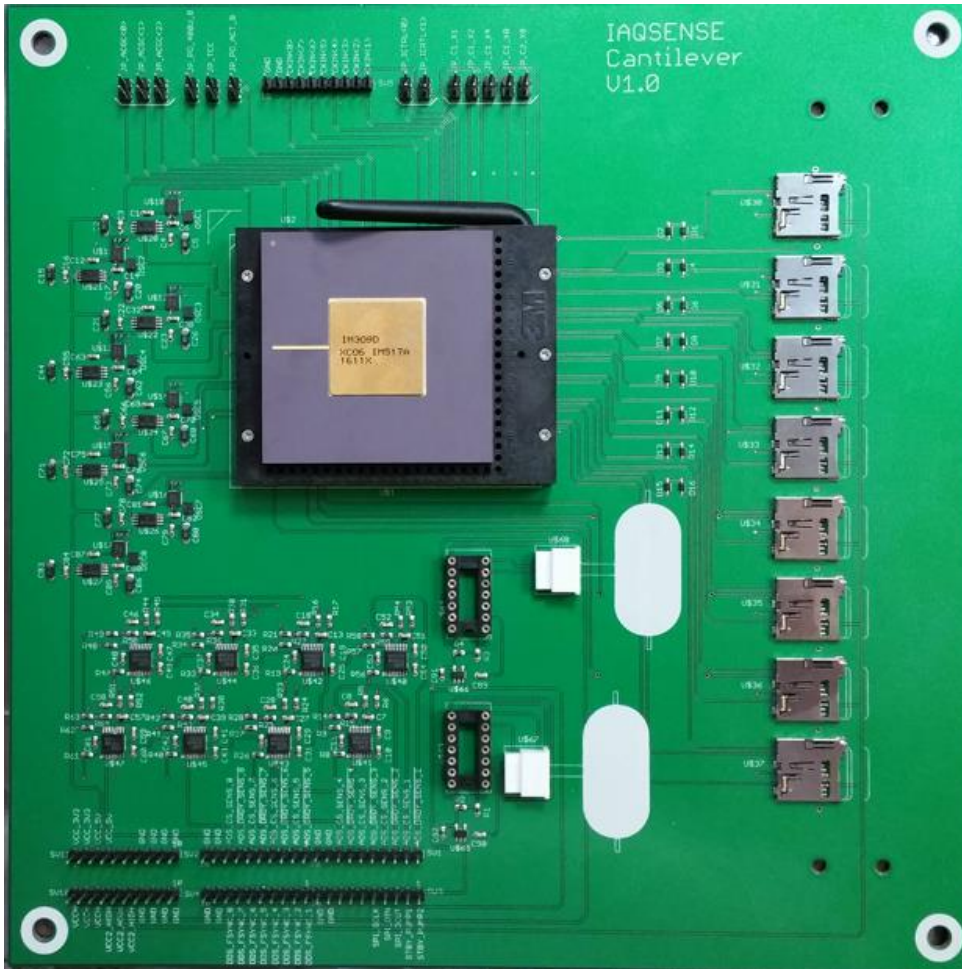
Boards

MSS Board



[Tapez ici]

Cantilevers Boards



8-Cantilever Board with 8 channels ASIC



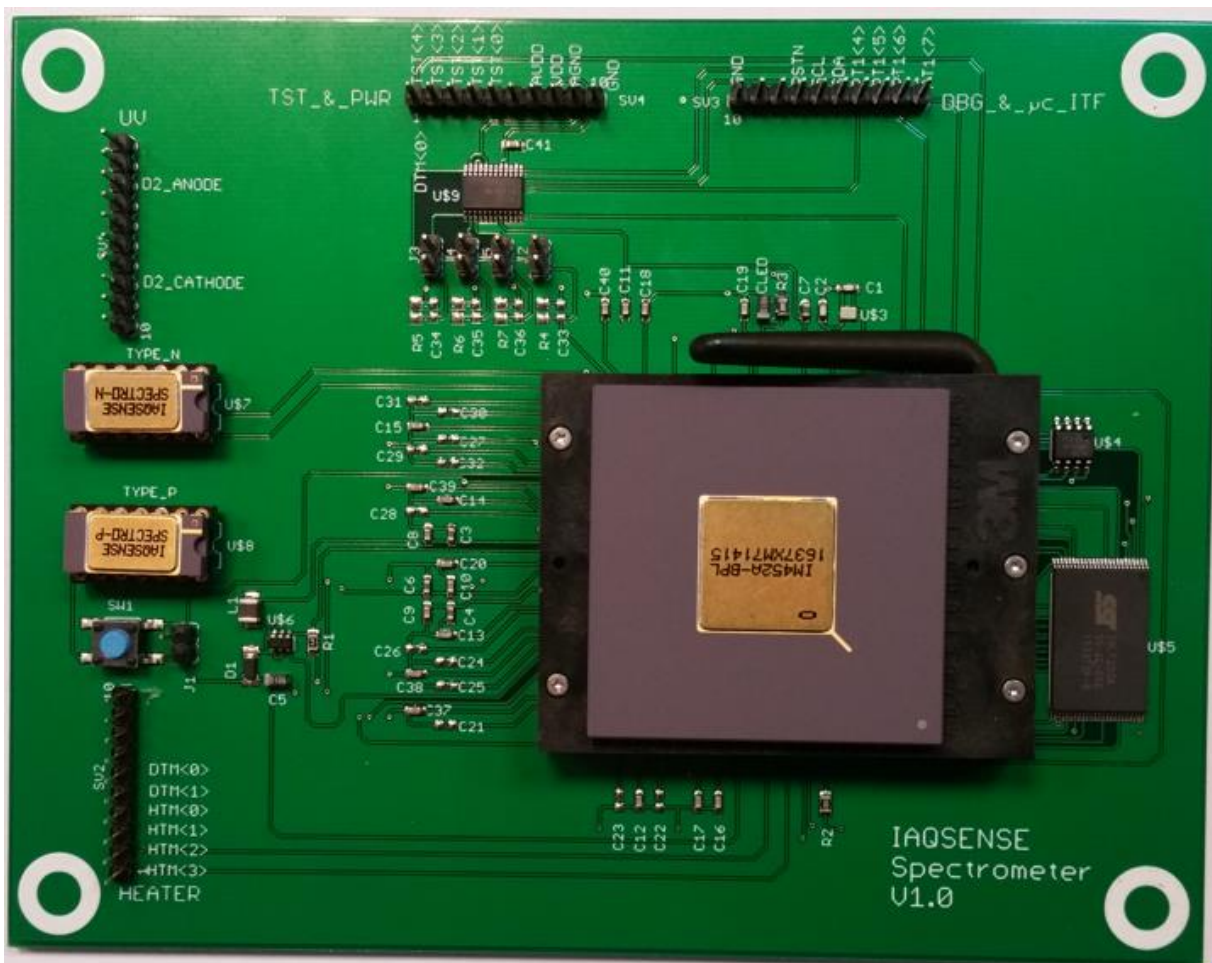
Dedicated Board with lock-in amplifier for acquisition of a 8-Cantilever network, using MSP432 DSP

[Tapez ici]



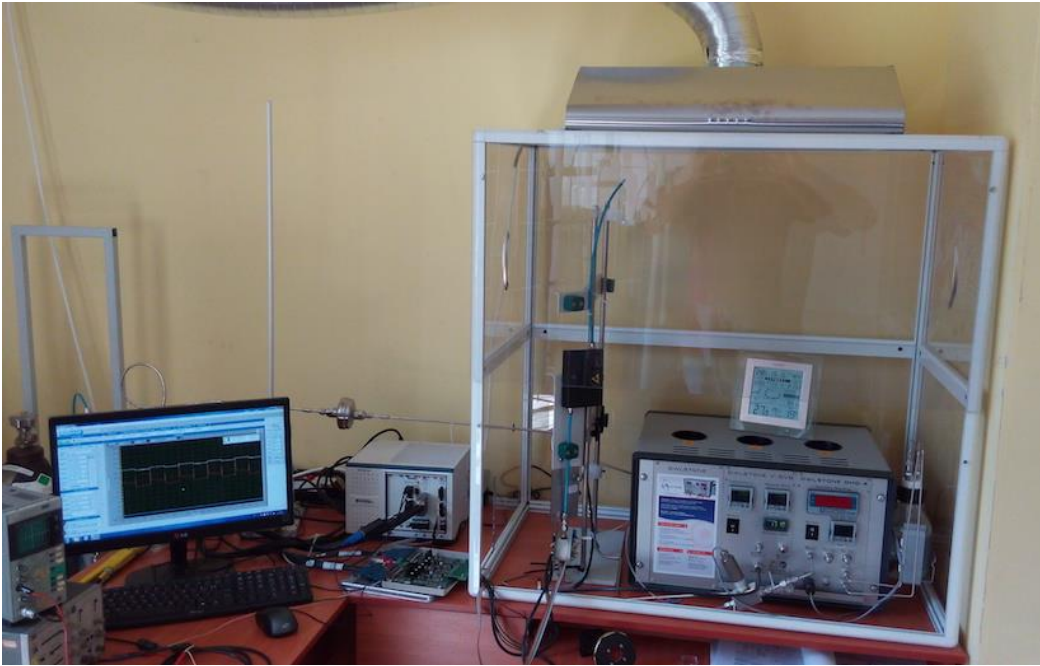
MSP432 DP Board used for Machine Learning (Spectrometer on Chip) before upload on ASIC IM452A embedded controller.

Spectrometer on Chip Board



[Tapez ici]

Chemical Lab in IAQSense Ltd



Sofia Lab installation with Safety Camera and gas extraction, in chamber temperature / hygrometry monitoring