



THE ISSUE

Traffic Health Environment

Intelligent Solutions for Sustaining Urban Economies



The East Midlands Space Cluster:

❖ The University of Leicester (G-STEP)

Academic – industry partnership for end-user applications of GMES and remote sensing data systems.

❖ University of Nottingham (NGI & GRACE)

Applications of satellite navigation and near-to market space applications.

❖ De Montfort University

Computational Intelligence analysis of complex real-time data; Embedded systems and Microelectronics.

❖ Infoterra Ltd (Astrium Geo-Information Services)

Geo-information services covering the entire geo-spatial value chain.

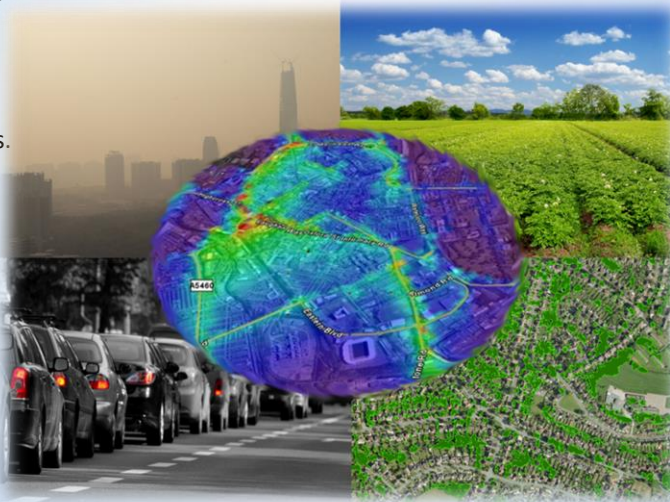
❖ Leicester City Council

End-user of advanced technologies in traffic and air quality management.

UK EAST MIDLANDS

Innovations to reduce traffic congestion and improve air quality

to deliver solutions which enhance the economic, social and environmental health of urban and regional communities



A partnership to deliver innovative solutions for Intelligent Traffic Management Systems

Applications of :

- ❖ GMES/ Earth Observation Technologies for non-space industry sectors
- ❖ Satellite navigation
- ❖ Geospatial sciences

WEBSITE:
<http://theissue.eu>

PROJECT COORDINATOR
Steve Dibnah
steve.dibnah@leicester.gov.uk

UK THE ISSUE CONTACT
Professor Alan Wells
UK-THE-ISSUE@le.ac.uk

