

Robot Fleets for Highly Effective Agriculture and Forestry Management (RHEA)

FP7-NMP-245986

Figures



Fig. 1.1. The RHEA fleet: Base station, two GMUs out of three and the two AMUs

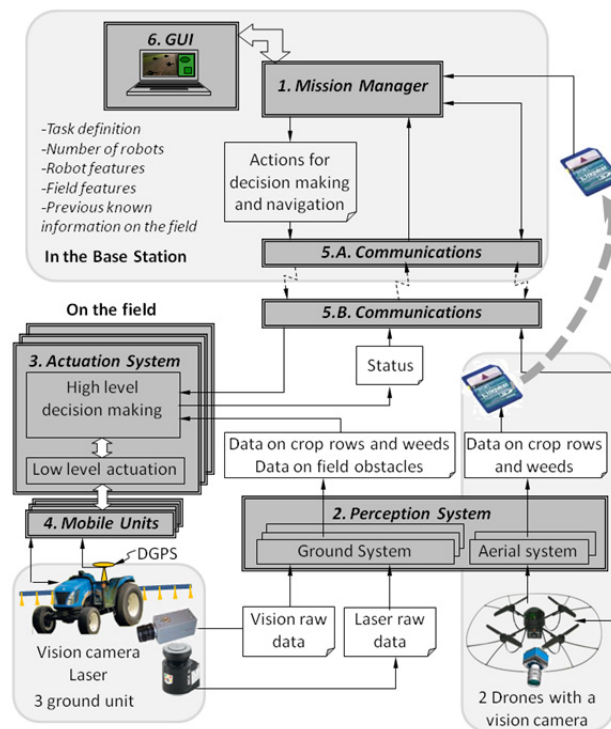


Fig. 1.2. RHEA system architecture



Fig. 1.3. Fleet missions in different fields

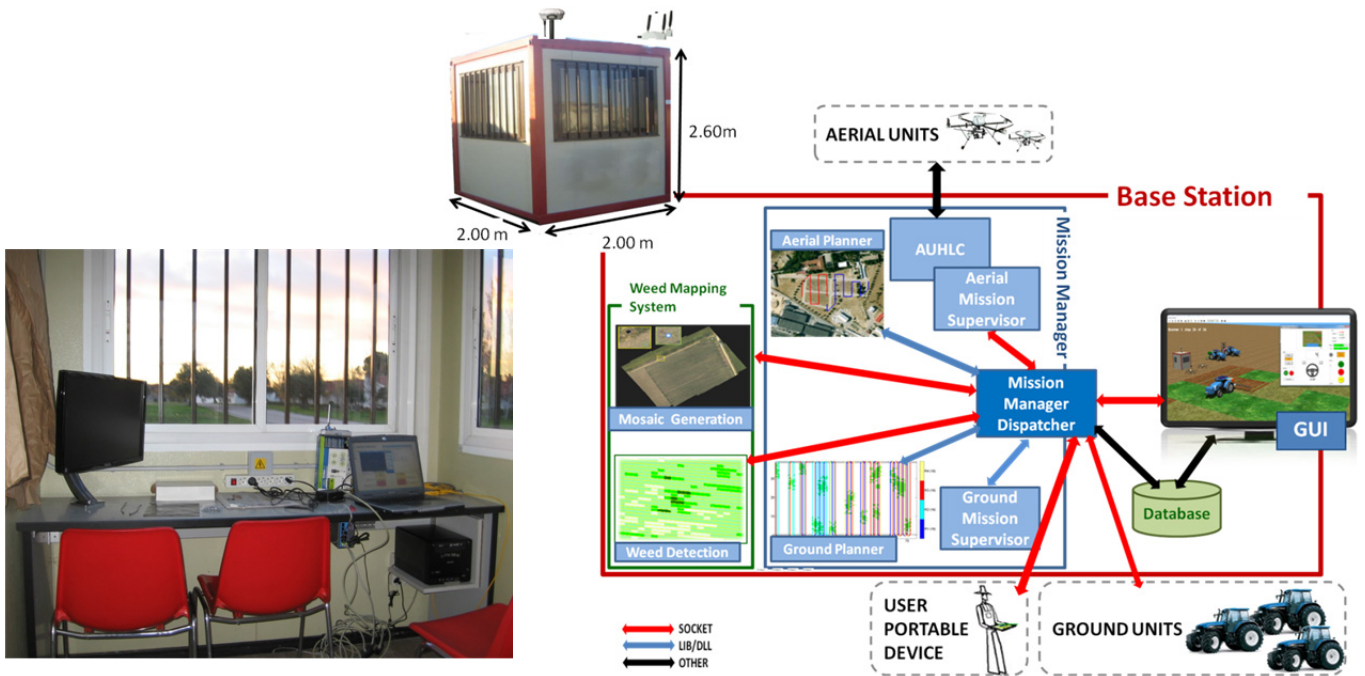


Figure 2.1. Base Station and its system architecture

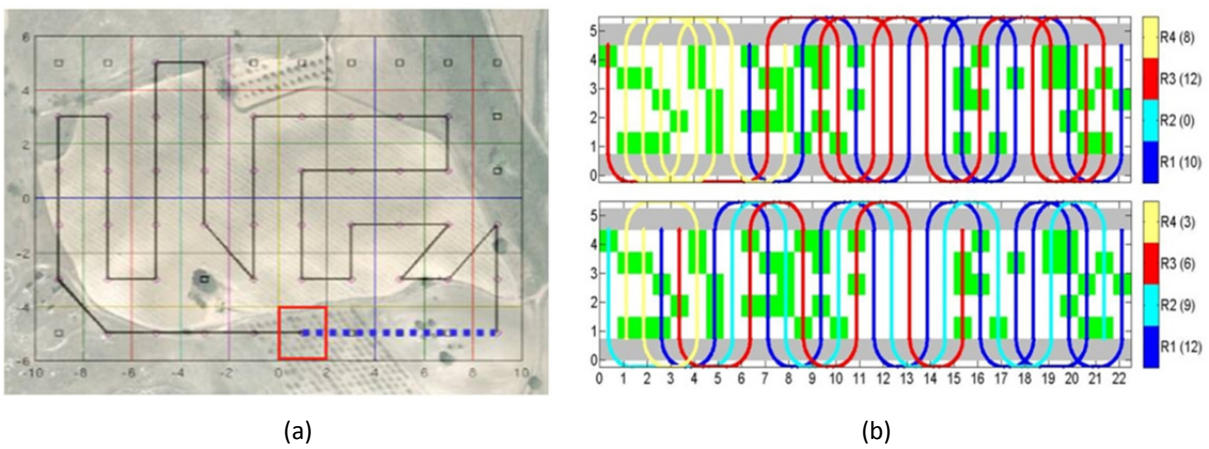


Fig. 2.2: (a) A plan for aerial units; (b) Two examples of plans for the fleet of ground vehicles

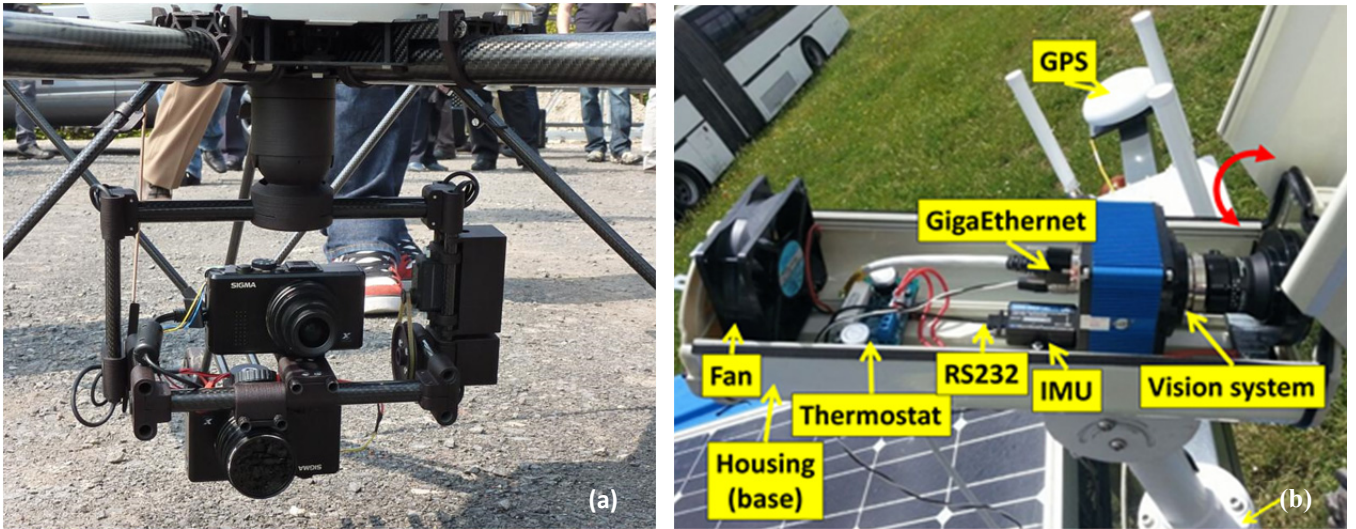


Fig. 3.1. (a) Remote Perception System installed on an aerial unit and (b) Ground Perception System installed on a GMU



Fig. 4.1: (a) Patch sprayer; (b) Canopy sprayer and (c) Mechanical and thermal device



Figure 5.1. The 3 Ground Mobile Units

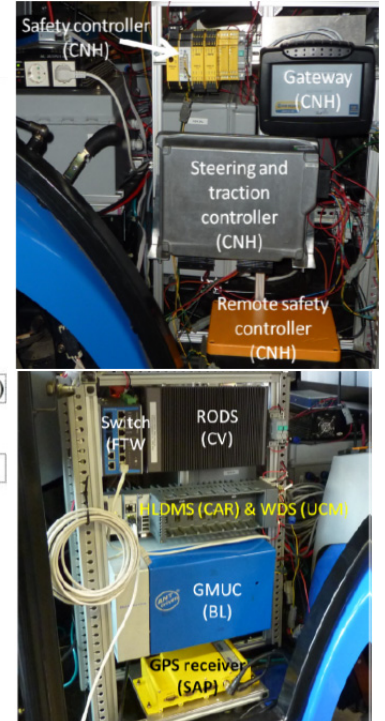


Fig. 5.2. Different subsystems onboard the GMU



Figure 5.3. Aerial Mobile Unit

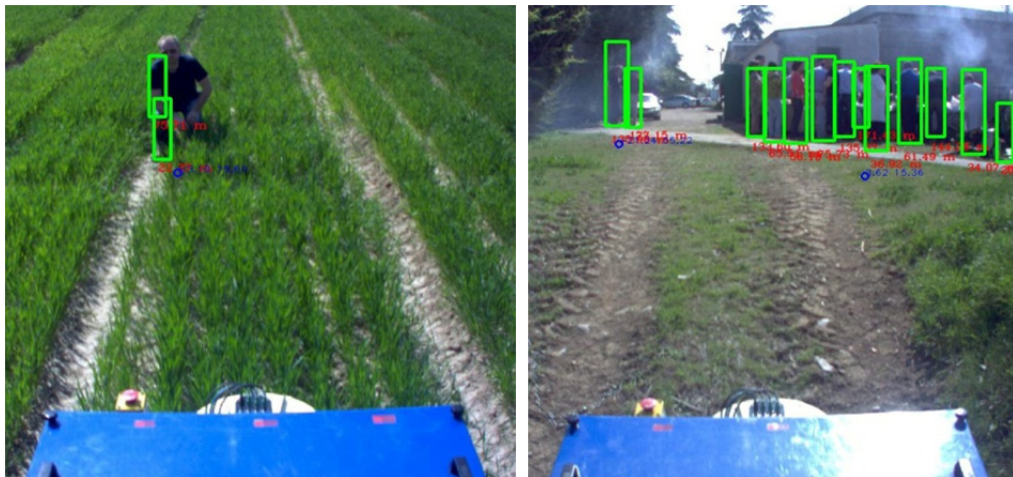


Figure 5.4. Obstacle detection with categorization



Fig. 5.5. Fuel cell system

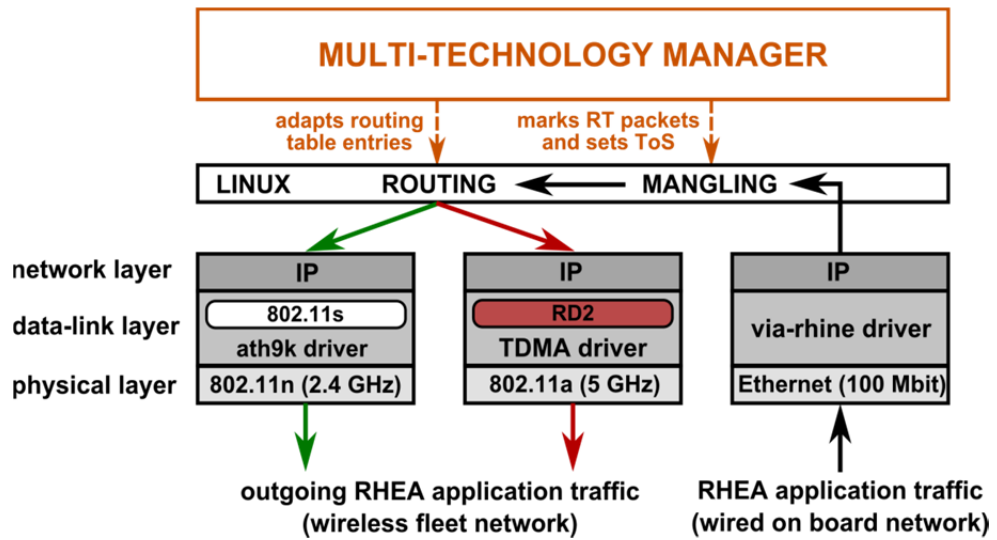


Fig. 6.1. A high-level overview of the communication system architecture

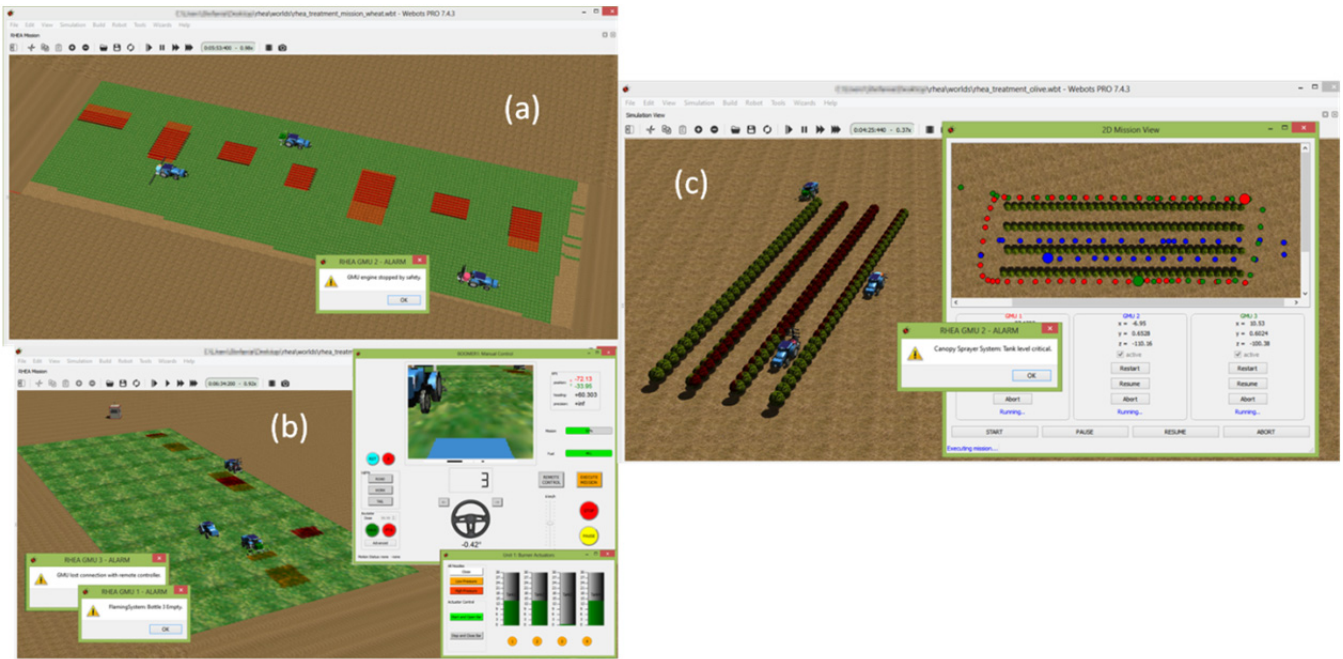


Fig. 7.1. Graphic User Interface illustrating different scenarios



Fig. 9.1. RHEA booths at (a) Agritechnica and (b) FIMA

The RHEA consortium

N	Type	Beneficiary name (Acronym) and country <i>Research groups</i>	Acronym Logo	Beneficiary representative <i>Group leader</i>
1	RI ^(*)	Agencia Estatal Consejo Superior de Investigaciones Científicas (CSIC) (Coordinator) Spain		
		<i>Centro de Automatica y Robotica</i>	(CSIC-CAR)	Pablo Gonzalez-de-Santos (Project Coordinator) pablo.gonzalez@csic.es
		<i>Instituto de Ciencias Agrarias</i>	(CSIC-ICA)	Cesar Fernandez-Quitaniella cesar@ccma.csic.es
		<i>Instituto de Agricultura Sostenible</i>	CSIC-IAS)	Francisca Lopez Granados flgranados@ias.csic.es
2	SME	CogVis GmbH (CV) Austria		Michael Brandstötter brandstoetter@cogvis.at
3	RI	Forschungszentrum Telekommunikation Wien Ltd. (FTW) Austria		Slobodanka Tomic tomic@FTW.at
4	SME	Cyberbotics Ltd (CY) Switzerland		Stefania Pedrazzi Stefania.Pedrazzi@cyberbotics.com
5	UNI	Università di Pisa (UP) Italy		Andrea Peruzzi aperuzzi@agr.unipi.it
6	UNI	Universidad Complutense de Madrid (UCM) Spain		Gonzalo Pajares pajares@fdi.ucm.es
7	SME	Tropical (TRO) Greece		George Kaplanis gkaplanis@tropical.gr
8	SME	Soluciones Agrícolas de Precisión S.L. (SAP) Spain		Manuel Perez-Ruiz manuelperez@us.es
9	UNI	Universidad Politécnica de Madrid (UPM) Spain		
		ETS Ingenieros Agrónomos	UPM-EIA	Pilar Barreiro pilar.barreiro@upm.es
		ETS Ingenieros Industriales	UPM-EII	Antonio Barrientos antonio.barrientos@upm.es
10	SME	AirRobot GmbH & Co. KG (AR) Germany		Burkhard Wiggerich b.wiggerich@airrobot.de
11	UNI	Università degli Studi di Firenze (UF) Italy		Marco Vieri marco.vieri@unifi.it
12	RI	IRSTEA (IRs) (Previously CEMAGREF (CE)) France		Gilles Rabatel gilles.rabatel@irstea.fr
13	IND	Case New Holland Industrial (CNHi)		
		<i>Case New Holland Industrial Belgium N.V.</i>	CNH-B	Bart Missotten bart.missotten@cnhind.com
		<i>Case New Holland Industrial France</i>	CNH-F	Thierry Le Briquer thierry.lebriquer@cnhind.com
14	SME	Bluebotics S.A. (BL) Switzerland		Nicola Tomatis nicola.tomatis@bluebotics.com
15	SME	CM Srl (CM) Italy		Gennaro Petillo rino.petillo@yahoo.it

(*) **RI:** Research Institution; **SME:** Small and medium enterprises; **UNI:** University; **IND:** Large industry

List of acronyms

MM	Mission Manager	
	MP	<i>Mission Planer</i>
	MS	<i>Mission supervisor</i>
HLDMS	High Level Decision Making System	
LLAS	Low Level Actuation System	
	GMUC	<i>Ground Mobile Unit Controller (Part of the LLAS)</i>
	AC	<i>Actuation Controller (Part of the LLAS)</i>
RODS	Row and Obstacle Detection System	
	RDM	<i>Row Detection Module (Part of the RODS)</i>
	ODM	<i>Obstacle Detection Module (Part of the RODS)</i>
WDS	Weed Detection System	
GPS	Global Positioning System	
DGPS	Differential Global Positioning System	
LS	Location System	
RSS	Remote Sensing System	
LGSS	Laser Ground Sensing System	
	LODM	<i>Laser Obstacle detection Module (Part of the LGSS)</i>
	LCSM	<i>Laser Crop Status Module (Part of the LGSS)</i>
GMU	Ground Mobile Unit	
AMU	Aerial Mobile Unit	
AUHLC	Aerial Unit High Level Controller	
AUGCS	Aerial Unit Ground Control System	
UPD	User Portable Device	
GUI	Graphic User Interface	