

Figures and tables listed in sections:

1.3 A description of the main S&T results/foregrounds

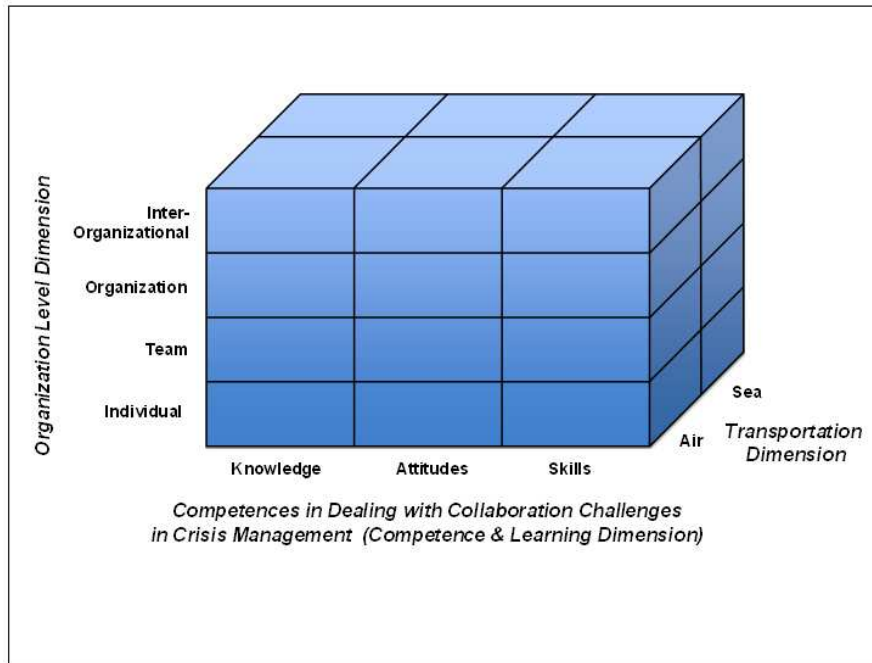


Figure 1: L4S Research Framework

The screenshot shows the L4S Knowledge Community interface. The main content area displays a list of relevant contents and forum entries. The 'Relevant Contents' section includes items like 'Cases and Examples Challenges Competences Definitions and classifications situational competences Group team and network Inter-organizational Interpersonal and individual Learning Organizational Other Other Other Processes and Tools Simulations'. The 'My Entries' section shows forum posts such as 'Suggestions and ideas to include the OWS in the learning experiences' and 'The International Simulation & Gaming Yearbook - Volume 6 - Contributions'. The right sidebar contains 'News and Events' with dates and 'Who's on' listing users like Stefan Lutz and Cedric Olli.

Figure 2 : KC interface

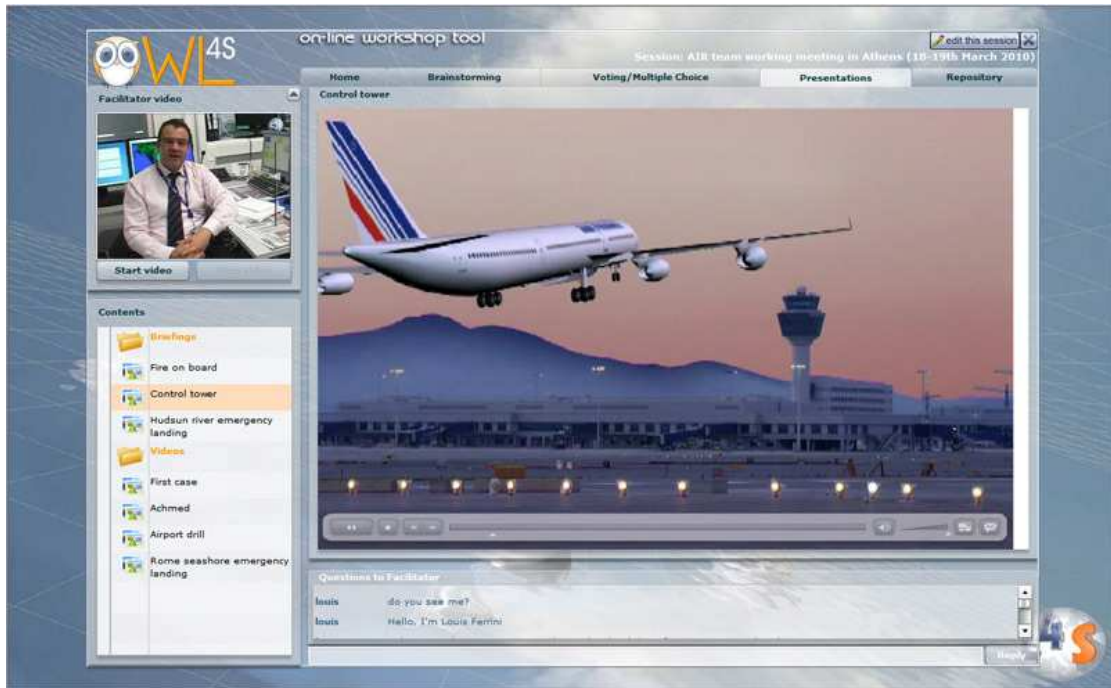


Figure 3: OWL4S participant's interface (repository area)

Perspectives Of Organizational Levels

L4S Learning Experiences Prototypes

Individual

Group

Organizational

Inter-Organizational



CRISIS TEAM



Figure 4: Positioning Matrix of the L4S Prototypes (above)

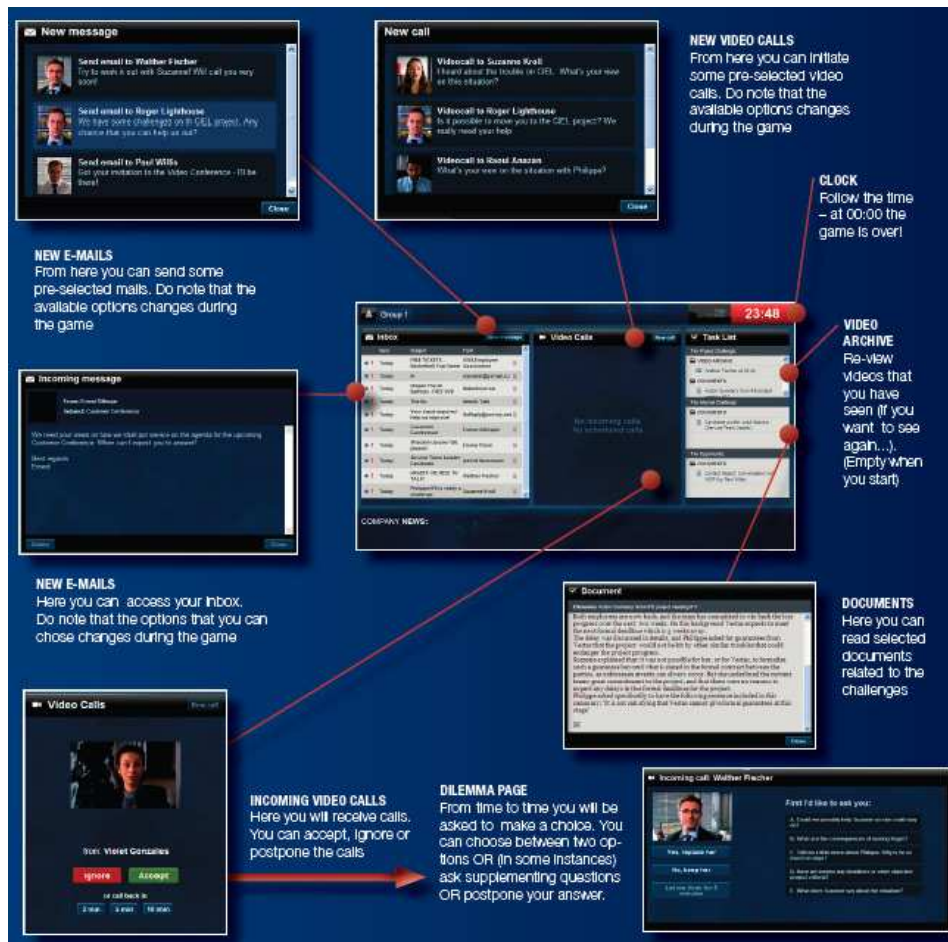


Figure 5: Overview of User Interface at Level 3 of the IMPACT Simulation

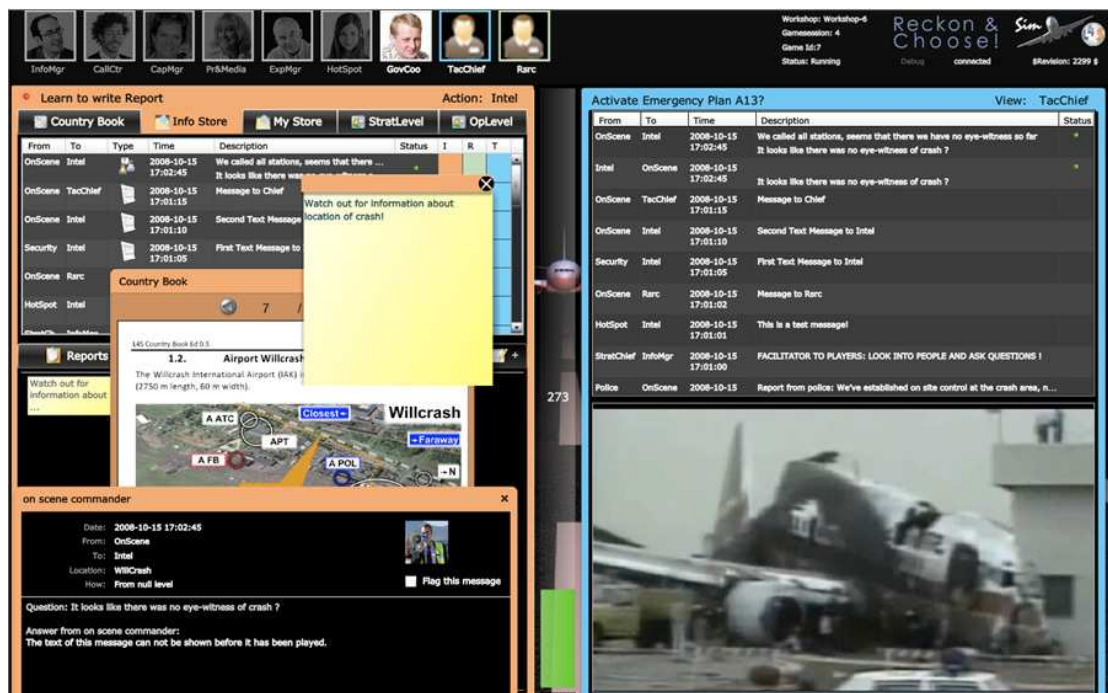


Figure 6: The main display of the Reckon & Choose! Prototype, structured into the "view mode" (right hand side) and "action mode" (left hand side).

CRISIS TEAM



Figure 7: Operating Team's Interface in CRISIS TEAM simulation

CRISISTUBE Networks



- 1 The **Control Panel**: for network display parameters.
- 2 The **Network Visualisation & Navigation** window: where to visualize and browse through networks.
- 3 The **Search** button: to trigger specific searches
- 4 + 7: Specific pull down menus to specify a query like "Display all the people who have seen a video."
- 5 The **Object** pull down menu: search parameter
- 6 The **Include** check box: to extend the search criteria (e.g., "... and include all the people he knows").
- 8 The **Query** button: click here to perform queries and display the results in 2.
- 9 The **Spacing** slider helps you to increase/decrease the distance among the objects displayed in 2.

CRISISTUBE Reference Guide/v0.9/L4S/0810

Figure 8: Operating the Networks Visualization Pane in CRISISTUBE

L4S Prototype	Organizing Partner(s)	Pilot Report Main Author	Other Involved Organizations	Description of Pilot Users	Pilot Users
<i>Reckon&Choose!</i>	OFAI, Frequentis	Petta/OFAI	CNS Solutions & Support GmbH	Crisis Mgmt Experts	8+2
<i>Reckon&Choose!</i>	UCSC, OFAI	Petta/OFAI		Crisis Mgmt Students	38+2
<i>Reckon&Choose!</i>	Deloitte, OFAI	Petta/OFAI	Aegean University Chios, Greece	General Mgmt Students	48+1
IMPACT Level 2 (Mayday)	Deloitte, ALBA	Mylonopoulos/ALBA	Aegean University Chios, Greece	University Students	30+1
IMPACT Level 2 (Mayday)	WHL	Fliaster/WHL		Academics	11+1
IMPACT Level 2 (Mayday)	AlphaLabs	Angehrn/AlphaLabs	J Lauritzen A/S Shipowners, Mannaz	Crisis Experts & Top Mgmt	11+2
IMPACT Level 1 (EagleRacing)	AlphaLabs	Angehrn/AlphaLabs	Erasmus University, Rotterdam	General Mgmt Students	66+2
IMPACT Level 3 (What-A-Day)	AlphaLabs	Angehrn/AlphaLabs	INSEAD Business School, Fontainebleau	Academics	12+2
CrisisTeam	ALBA	Mylonopoulos/ALBA	Technical University of Crete (TUC)	Students	Cancelled cause of strike
CRISITube	AlphaLabs	Angehrn/AlphaLabs	Kreab Crisis Mgmt Academy	Crisis Mgmt Experts	7+2
CrisisTeam	ALBA, AIA	Mylonopoulos/ALBA	AIA premises, Athens, Greece	Crisis Experts & Top Mgmt	20

Table 1: Overview Table of Pilots conducted in the first round

L4S Prototype	Organizing Partner(s)	Pilot Report Main Author & Facilitator	Other Involved Organizations	Description of Pilot Users	Pilot Users
CrisisTeam	ALBA, AIA	Mylonopoulos/ALBA	AIA premises, Athens, Greece	Crisis Experts & Top Mgmt	19
CrisisTeam	UCSC	Lombardi /ALBA	UCSC Milan, Italy	Civil Protection professionals & under gr. students	12
IMPACT Level 2 (Mayday)	WHL	Fliaster/WHL	University of Armed Forces Munich (UAFM), Germany	Academics	10
IMPACT Level 2 (Mayday)	WHL	Fliaster/WHL	ESC Toulouse, France	Aerospace MBA program	26
IMPACT Level 2 (Mayday)	WHL	Fliaster/WHL	Universidad Alcala de Henare, Spain	Master in Tourism, Master in Management and MBA in Management	30
IMPACT Level 1 and 2	ALBA	Mylonopoulos/ALBA	Eurobank, Vytina, Peloponnese, Greece	Top Managers	20
IMPACT Level 2 (Mayday)	ALBA and DELOITTE	Mylonopoulos/ALBA	Deloitte, Athens, Greece	Top level exec's from shipping and logistics, consultants	15
IMPACT Level 3 (What-A-Day)	AlphaLabs	Angehrn/AlphaLabs	INSEAD CEDEP (Sept 2011), and Schlumberger (Oct-Nov 2011), France	Top level managers and decision makers	850
<i>Reckon&Choose!</i>	AIA, OFAI	Petta, Micko/OFAI	AIA, including member of EU FP7 TASS ¹ , Athens, Greece	Crisis Mgmt Experts	12 + 2 facilitators
<i>Reckon&Choose!</i>	CREUERS, OFAI	Petta, Micko/OFAI	Participants from L4S Consortium, Barcelona Spain	Crisis Mgmt Experts	9 + 2 facilitators
<i>Reckon&Choose!</i>	FREQUENTIS, OFAI	Petta, Micko/OFAI	Red Cross Vienna (EU FP7 CAST ²), SE2 Solutions (security), ITBH (IT), University of Vienna (Cognitive	Crisis Mgmt Experts, First Responders Academic simulation-game based learning	6 + 1 facilitator

¹ TASS: Total Airport Security System, grant 241905, <http://www.tass-project.eu/> (visited 2011-05-31)

² CAST: Comparative Assessment of Security-Centered Training Curricula for First Responders on Disaster Management in the EU, grant 241905, <http://www.castproject.eu/> (visited 2011-05-31)

			Science), Vienna, Austria	experts	
CRISITube	CREUERS, AlphaLabs	Subirana/CREUERS	L4S Partners	Project members	16+1 facilitator

Table 2: Overview Table of Pilots conducted in the second round

L4S Prototype	Organizing Partner(s)	Other Involved Organizations	Description of Pilot Users	Number of Pilot Users	Workshop Date
Reckon&Choose!	OFAI	AIA	First Responders & External Crisis Actors	12	April 19 th 2011
Reckon&Choose!	OFAI and CREUERS	CREUERS and L4S Partners	Senior Executives from CREUERS and L4S Partners	3 + 6	April 29 th 2011
IMPACT Level 2 (Mayday)	WHL	UAFM	Military Officers, Researcher assistant, Professors	10	February 15 th 2011
IMPACT Level 2 (Mayday)	ALBA	EuroBank	Managers	20	February 19 th 2011
IMPACT Level 2 (Mayday)	WHL	Toulouse Business School	Full-Time MBA Program Delegates	26	February 24 th 2011
IMPACT Level 2 (Mayday)	WHL	Universidad de Alcalà de Henares, Spain	Master students	32	April 13 th 2011
IMPACT Level 2 (Mayday)	ALBA and Deloitte	Greek Maritime Companies	Executives	25	May 19 th 2011
IMPACT Level 2 (Mayday)	Frequentis	First responders, Transportation Actors, Research Inst., ICT Companies	Officers, Executives	15	June 7-8 th 2011

CrisisTeam	ALBA	AIA	Airport Executives	19	April 19 th 2011
CrisisTeam	UCSC	Civil Protection	Experts of Crisis Management	6	May 20 th 2011

Table 3: Overview Table of Pilots supported by the OWL4S

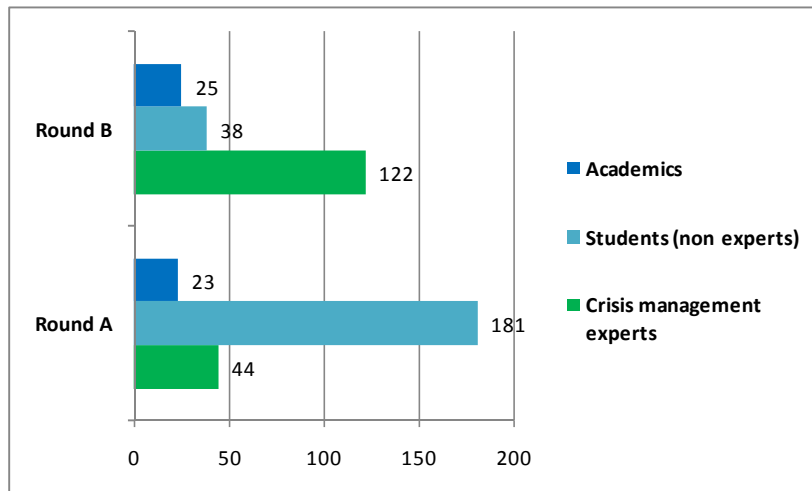


Figure 9: Piloting users in Round A and B

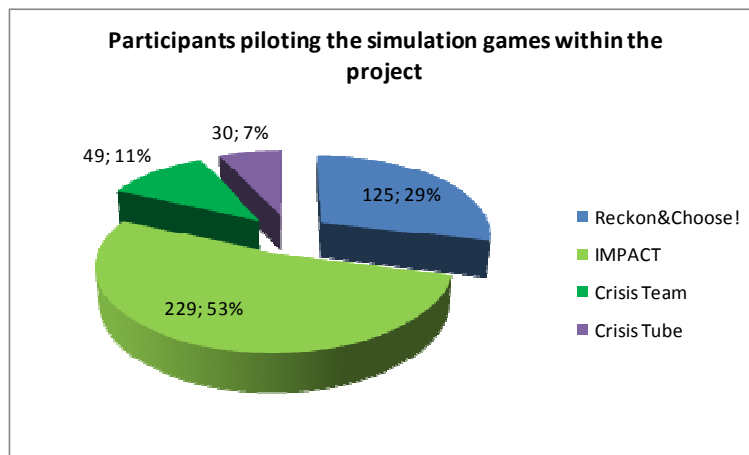


Figure 10: Participants involved in the piloting of the different simulation games within the project

1.4 Potential impact, main dissemination activities and exploitation of results

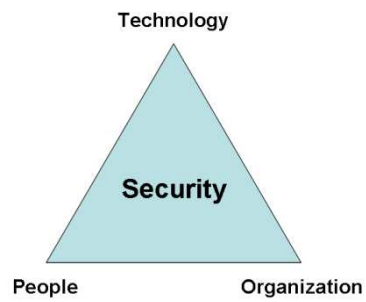


Figure 11: The three pillars of security (amended from the ESRAB Report)

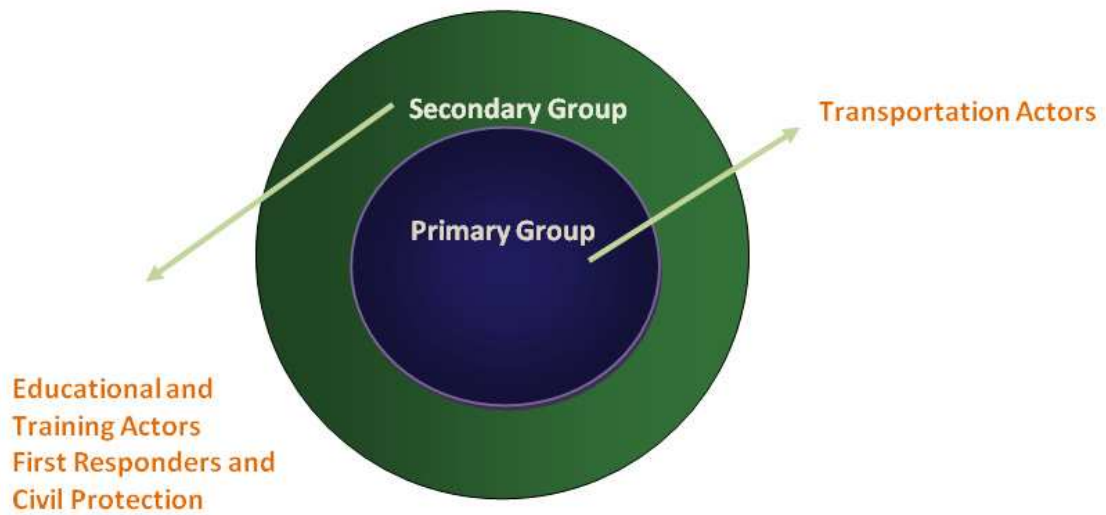


Figure 12: L4S Target Groups

Additional material

The L4S logo



L4S Consortium

Organization	Country	Contact persons	E-mail
DELOITTE BUSINESS SOLUTIONS (Coordinator)	Greece	Dimitris Charalampakis	dcharalampakis@deloitte.gr
OESTERREICHISCHE STUDIENGESELLSCHAFT FUER KYBERNETIK	Austria	Paolo Petta	paolo.petta@ofai.at
ALPHALABS SARL	France	Martina Eckert Albert Angehrn	martina.eckert@alpha-simulations.com Albert.ANGEHRN@insead.edu
ALBA GRADUATE BUSINESS SCHOOL	Greece	Nikos Mylonopoulos	nmylonop@alba.edu.gr
UNIVERSITA CATTOLICA DEL SACRO CUORE	Italy	Chiara Frigerio	chiara.frigerio@unicatt.it
FVA SAS DI LOUIS FERRINI & C	Italy	Louis Ferrini	ferrini@fvaweb.it
ATHENS INTERNATIONAL AIRPORT S.A.	Greece	Konstantinos Triantafyllou	TriantafyllouK@aia.gr
CREUERS DEL PORT DE BARCELONA SA	Spain	Brian Subirana	briansubirana@gmail.com
FREQUENTIS AG	Austria	Flachberger Christian	Christian.FLACHBERGER@frequentis.com
AKAD WISSENSCHAFTLICHE HOCHSCHULE LAHR GMBH	Germany	Alexander Fliaster	alexander.fliaster@whl-lahr.de

Demonstration videos of the L4S Simulation Prototypes

Crisis tube: <http://www.calt.insead.edu/eis/l4s/crisistube/>

Impact: <http://www.calt.insead.edu/eis/l4s/impactv1/Level1Intro.php>

Reckon&Choose!: <http://l4s.ofai.at:9080/AIRONE-Server/>

Online Workshop Tool (OWL4S): <http://owl.fvaweb.eu/main/session.html>

Indicative photos of the “International Symposium on Crisis Management” – ISCM 2011



Picture 1: The 1st Panel Session: "Crisis Management Competencies development in Air Transport"



Picture 2: Mr. Alexandros Aravanis, COO of Athens International Airport



Picture 3: Prof. Sanjay Sarma, Massachusetts Institute of Technology



Picture 4: Parallel Session of the "Crisis Team" facilitated by Prof. Nikos Mylonopoulos, ALBA

Interviews



Professor Sanjay Sarma from the Massachusetts Institute of Technology (MIT, USA), 10 June 2011

The video as well as more interview videos are available on the ISCM website (www.iscm2011.eu) and the L4S project's site (www.L4S-project.info)

Local TV Reportage on the L4S Simulation Prototypes

Local TV reportage and broadcasting on the “News” of “Alitheia” TV of the pilot sessions conducted at the University of Aegean in Chios island on 13&14 December 2010



The video is available on www.L4S-Project.info, Info/Press Kit area