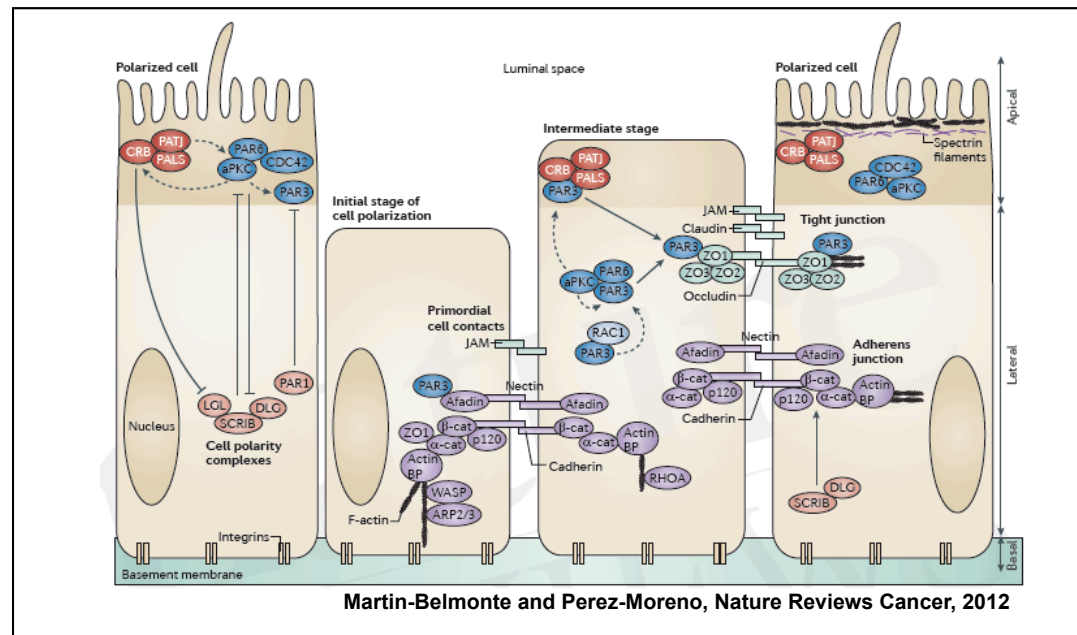
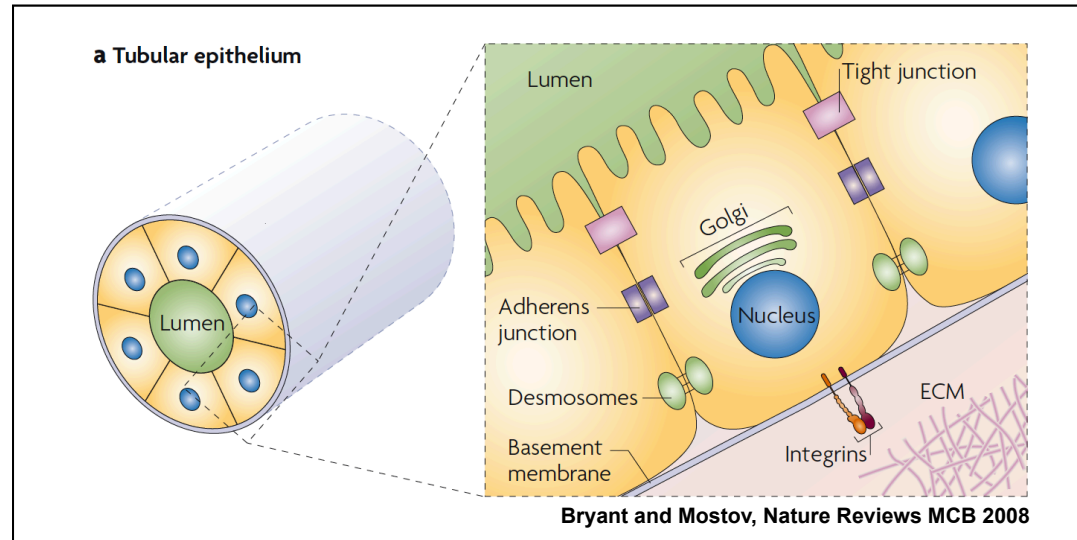
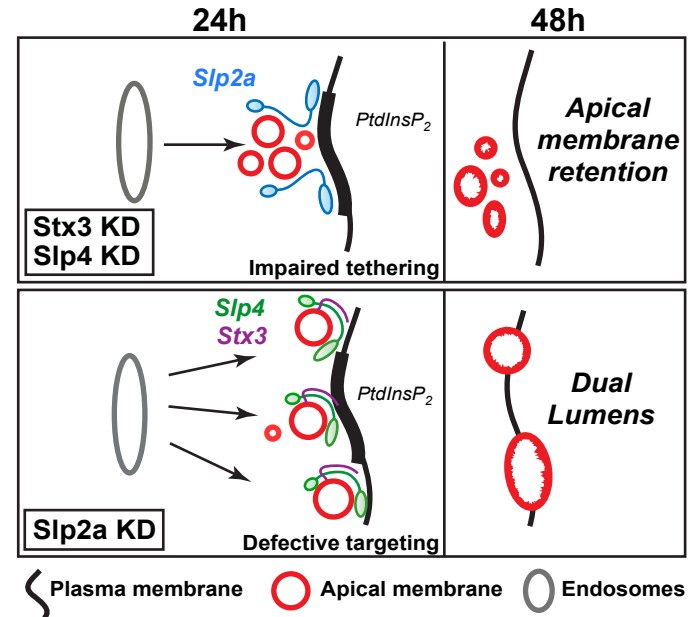
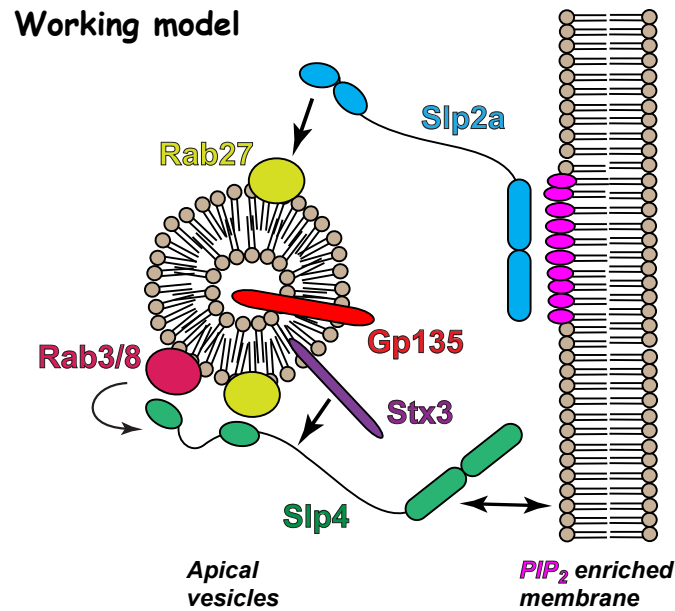


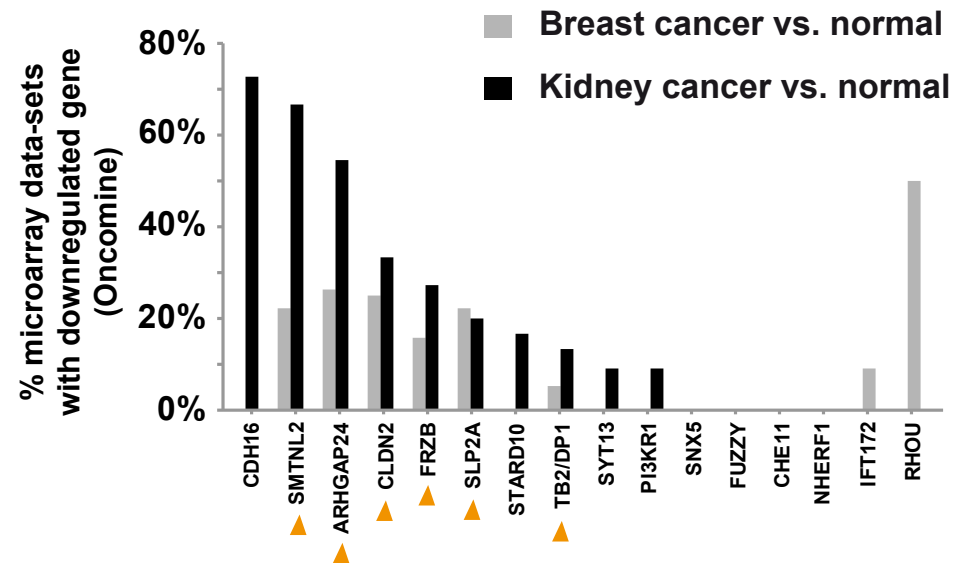
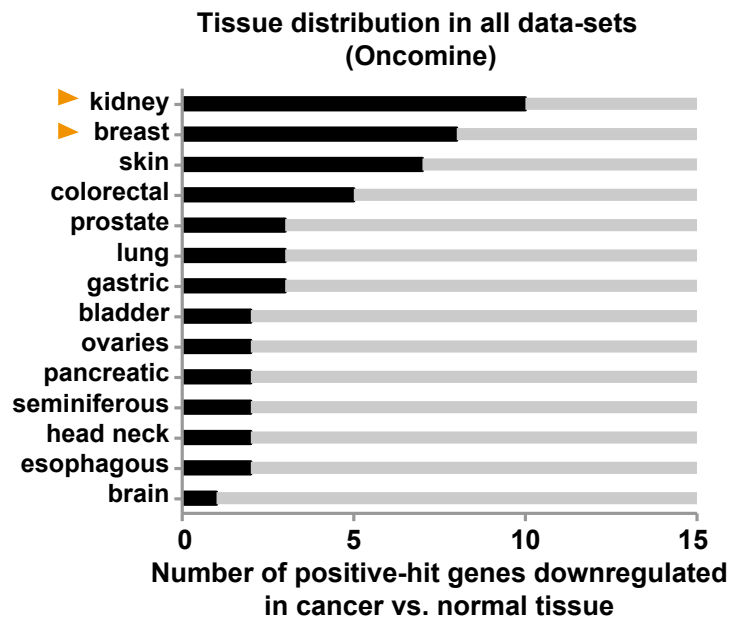
Formation of epithelia is a fundamental process in organ development



Slp2a and Slp4 control different steps in lumenogenesis



Significance: Most hits are associated with cancer



ITSN2 is a Cdc42-GEF for lumen morphogenesis

-ITSN2 is a Cdc42-GEF required for lumen morphogenesis

-ITSN2 localizes at centrosomes through the EH domains, and interacts with centrosomal proteins such as p150-Glued (Dynein/Dynactin complex)

-ITSN2 and Cdc42 are needed for normal orientation of mitotic spindle in cell division

-During cell division, Intersectin2 might activate Cdc42 to control the machinery involved in the stabilization of MT at the centrosomes.

