



UNIVERSITEIT TWENTE.



FULLPHASE



Fully integrated real time multi-wavelength
photoacoustics for early disease detection



Contact information

#	Organisation	Contact	e-mail
1	ESAOTE Europe BV, Maastricht, the Netherlands	Peter Brands (coordinator)	peter.brands@esaote.nl
2	MIRA Institute for Biomedical Technology and Technical Medicine, University of Twente, Enschede, the Netherlands	Wiendelt Steenberg	W.Steenbergen@utwente.nl
3	QUANTEL, Paris, France	Olivier Rabot	olivier.rabot@quantel-diodes.com
4	SILIOS Technologies, Peynier, France	Stephane Tisserand	stephane.tisserand@silios.fr
5	Institute of Applied Physics, University of Berne, Switzerland	Martin Frenz	frenz@iap.unibe.ch
6	OSRAM Opto Semiconductors GmbH, Germany	Martin Müller	martin.mueller@osram-os.com
7	Ruhr-Universität Bochum, Germany	Georg Schmitz	Georg.Schmitz@ruhr-uni-bochum.de
8	Brightloop, France	Florent Liffran Pierre Robert-Patterson	florent.liffran@brightloop.fr pierre.robert@brightloop.fr
9	Biomedical Engineering (BMT), Eindhoven University of Technology TU/e, the Netherlands	Frans van de Vosse	f.n.v.d.vosse@tue.nl
10	TP21 GmbH, Germany	Petra Zalud	zalud@tp21.com
11	ZGT, Hospital Group Twente, the Netherlands	Hein Moens	H.Moens@zgt.nl

Change in healthcare delivery

Huge increase of chronic diseases

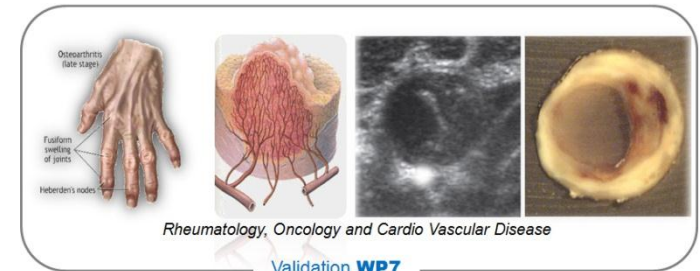
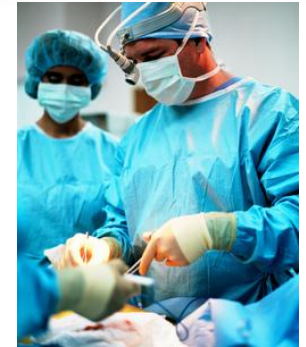
➤ Healthcare at affordable cost is a major challenge due to:

- Aging population.
- Increasing prevalence of chronic diseases.

○ **Key items will be**

- Point-of-care early disease detection
- Treatment monitoring
- Prevention

- FULLPHASE is on this track

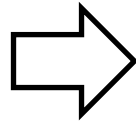


FULLPHASE

High risk challenging research

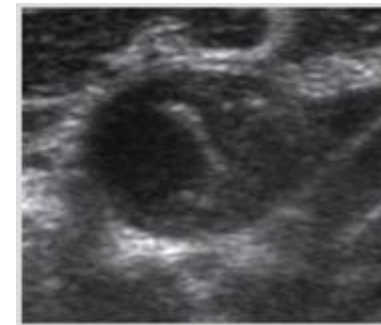
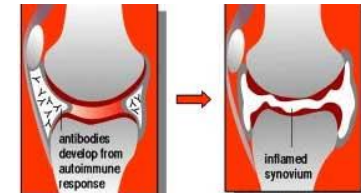
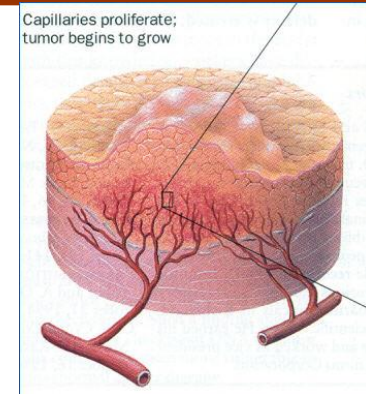
- **Beyond state-of-the-art in:**

- **Laser technology**
- **Penetration depth**
- **Laser beam forming**
- **Ultrasound detection**
- **Level of integration**



Medical applications

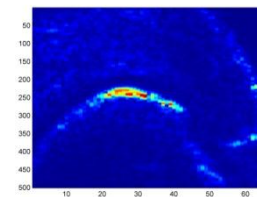
- **Oncology**
- **Rheumatology**
- **CVD looking at:**
 - Plaques characterisation
 - Plaque neovascularisation



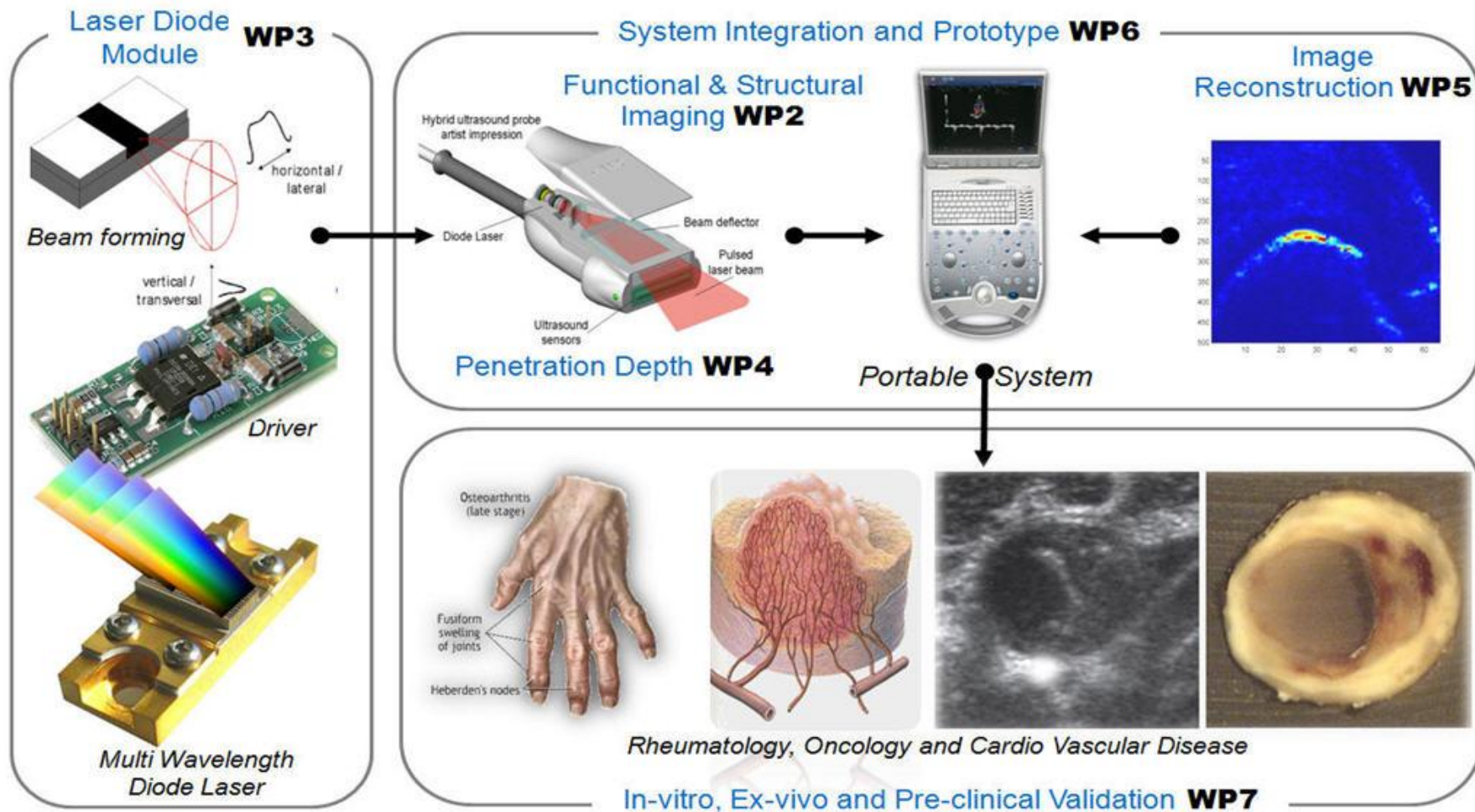
FULLPHASE objectives

Integrated set of research and development

- **FULLPHASE objectives**
 - **Portable PA/US system**
 - **Multi-wavelength functional PA imaging**
 - **A clinically suitable PA imaging depth**
 - **High temporal resolution and sensitivity**
 - **Multi modality imaging**



Activities



FULLPHASE exploitation

Project results

- **Portable PA/US system**



- **Ultra high energy IR source:** Scientific PIV, Designator, Illuminator and Active imaging



- **Multi-wavelength laser diode bar:** End pumping laser rod for defence application



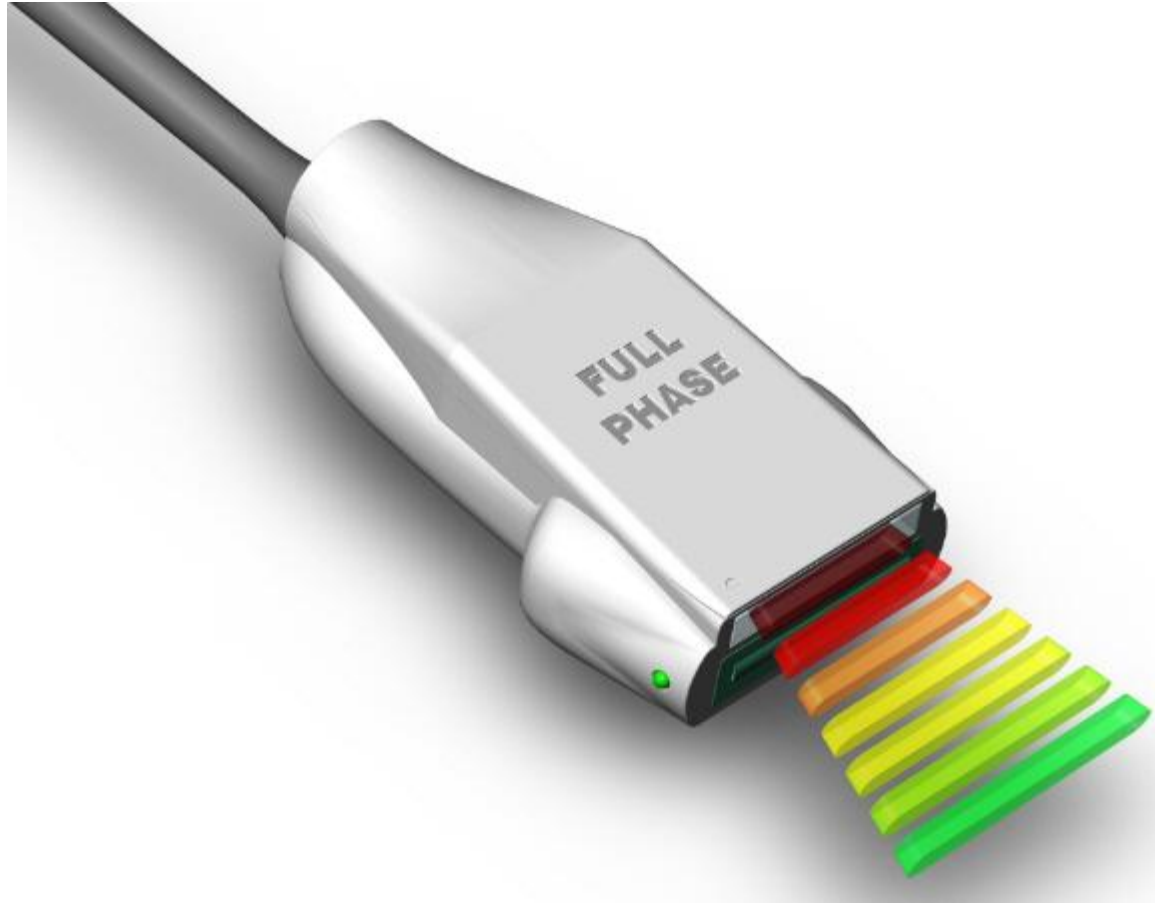
- **Multi-wavelength DOE:** Ultra large wavelength homogeniser bandwidth



- **High efficient laser driver:** Portable laser sources for any handset terminal



FULLPHASE logo



FULLPHASE general picture

FULLPHASE Concept

